



Rails 2022



Installation guide

WARNING

For your safety, read, understand and follow all the safety precautions and the instructions in this guide and on all EXO Sled labels.

This document does not replace the host snowmobile's safety and maintenance information. Therefore, read and understand your snowmobile's operation manual. Ensure you follow all safety precautions and maintenance information.

Copyright 2022 EXO Sled

All information in this guide is based on the last EXO Sled product information at the time of publication. Because our products are constantly improving, some minor differences may result between your EXO Sled kit and the information presented in this guide. With this publication, we only want to give you some references. Consequently, no legal responsibility can be accepted for omissions or inaccurate information.

Many thanks for your trust in our product.

We are pleased to know you will enjoy the full potential of your EXO Sled. Your rails will bring a optimized weight distribution on all conditions. Don't forget to visit our website at www.exosled.com for the latest EXO Sled news.

We are a small company with big passions, and we are continuously implementing innovation in our kits to give you the best riding experience.

If you need more information, you are always welcome to [contact us](#) via our website.

Introduction

Owners and users must read carefully this guide.

Keep in mind the pictures and illustrations may be slightly different from your product without affecting the sense of the document.

Follow carefully the instructions to properly install your new rails.

Safety

- **Always wear the appropriate safety gear (Gloves, glasses, shoes, etc.).**
- **Prepare and secure the snowmobile before this installation.**
- **Some components of the snowmobile must be reused. A special attention must be paid to the relocation of these parts.**
- **Pay attention to avoid debris or anything else that could interfere with mobile parts of the product.**
- **Stay away of the rails while track or suspension is moving,**

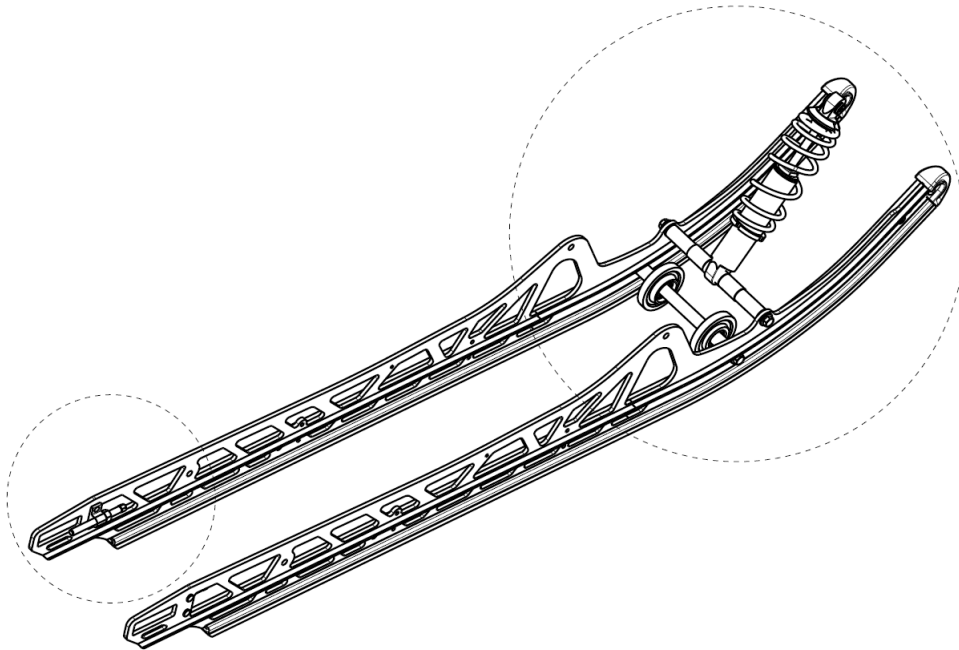
Step by Step

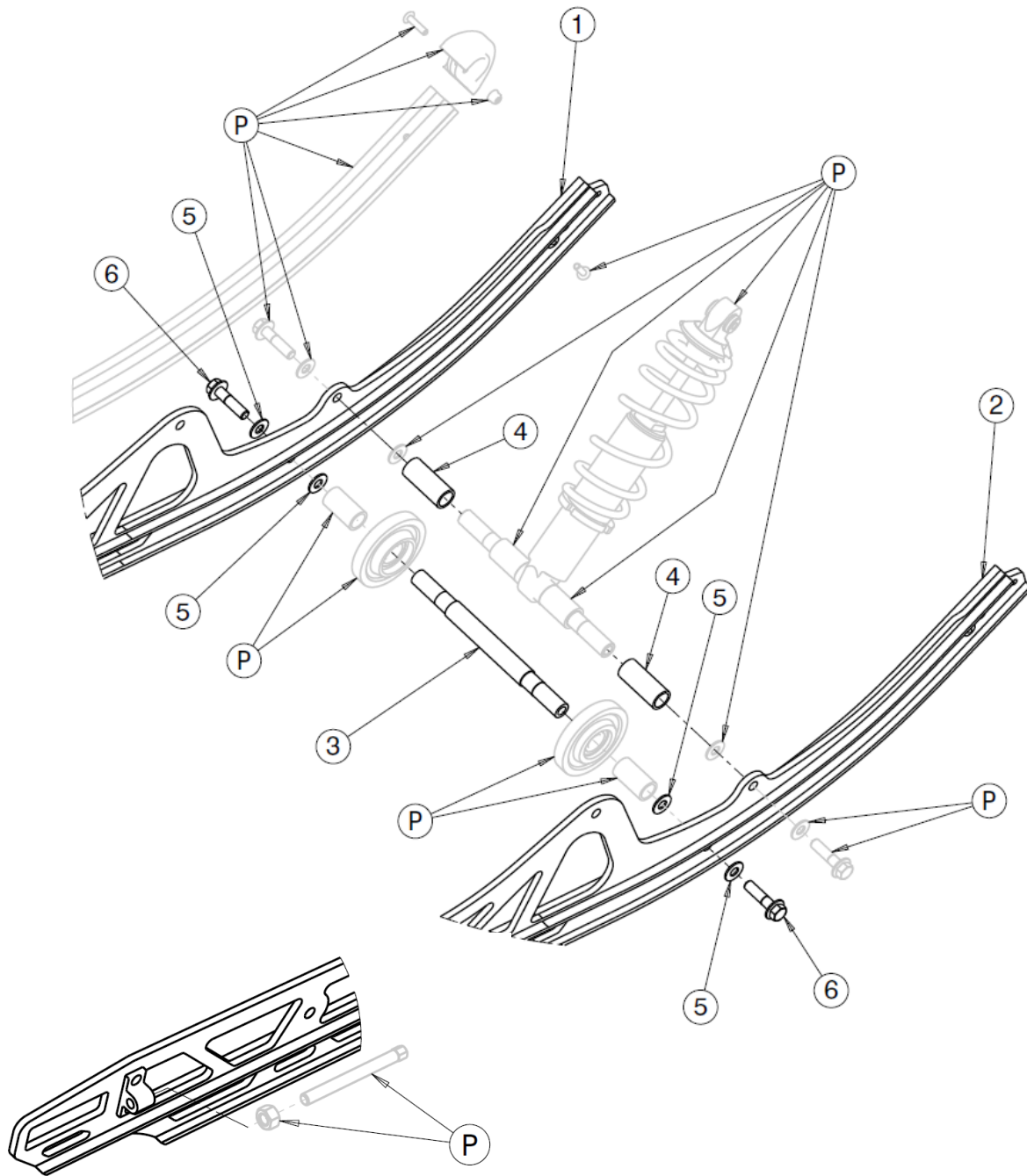
***See part list diagram for visual support**

- 1. Remove the rear idler shaft bolt.**
- 2. Remove the adjusting nut and screw.**
- 3. Remove the rear idler shaft (With wheel and all hardware).**
- 4. Unbolt the rails from all other shafts and pivot arm.**
- 5. Swap all components remaining on your rails to your new EXO Sled rails (front tips, Slides, Rubber bumper, Ice scratcher, etc.).**
- 6. Install the supplied shaft with your bogie wheel assembly and your outside spacer (Use bolts and washer supplied with the kit).**
- 7. Install the front shock with the vehicle shaft, inside spacer and our wheel spacer (Spacer who's replacing the wheel each side of the shock).**

- 8. Assemble the rails to all other shafts and pivot arm.**
- 9. Assemble the rear idler shaft (With wheel and all hardware).**
- 10. Install the adjusting nut and screw.**
- 11. Adjust the track tension as describes on the host snowmobile owner's manual.**
- 12. Make sure all component are well installed**

Part List & Configuration





Item	Qty	Part	Description
P	--	SNOWMOBILE PARTS	REUSE VEHICLE Parts
1	1	EXO SLED LH RAIL	LEFT RAILS
2	1	EXO SLED RH RAIL	RIGHT RAIL
3	1	ESW SHAFT 1	WHEEL SHAFT
4	2	ESW BUSHING	WHEEL SPACER
5	4	ESR WASHER	10mm WASHER
6	2	HEX FLANGE M10 X 40	M10 X 40 FLANGE BOLT