



# Owner's guide



**2024**

# **WARNING**

**For your safety, read, understand and follow all the safety precautions and the instructions in this guide and on all EXO Sled labels.**

**This document does not replace the host snowmobile's safety and maintenance information. Therefore, read and understand your snowmobile's operation manual. Ensure you follow all safety precautions and maintenance information.**

## **Copyright 2022 EXO Sled**

**All information in this guide is based on the last EXO Sled product information at the time of publication. Because our products are constantly improving, some minor differences may result between your EXO Sled kit and the information presented in this guide. With this publication, we only want to give you some references. Consequently, no legal responsibility can be accepted for omissions or inaccurate information.**

**Many thanks for your trust in our product.**

**We are pleased to welcome you in our EXO Sled family. Get ready to experience a new and powerful way of riding. Don't forget to visit our website at [www.exosled.com](http://www.exosled.com) for the latest EXO Sled news.**

**EXO Sled is proud to allow snowmobile users to convert their snowmobile into a snowbike with enhanced responsive handling, reliability and the power of a snowmobile.**

**We are a small company with big passions, and we are continuously implementing innovation in our kits to give you the best riding experience.**

**If you need more information, you are always welcome to [contact us](#) via our website.**

# **Introduction**

**Owners and users must read carefully this guide.**

**This guide should be kept with the EXO Sled kit since it's an important reference document.**

**Keep in mind the pictures and illustrations may be slightly different from your product without affecting the sense of the document.**

**Make sure the product's first try is made safely, in a open space and well-known area.**

**Carefully follow our installation instructions available on our website.**

# **Safety**

- **Make sure to do a pre-ride inspection before each ride.**
- **Pay attention to avoid debris or anything else that could interfere with mobile parts of the product.**
- **Be aware of your driving abilities and stay in control at all times.**
- **Keep your feet on the snowmobile running board at all time when the track is moving. As putting a foot outside the running board may result in serious injuries or death.**
- **Never ride with a passenger.**
- **Use extra caution when driving on slippery condition such as ice, hard pack snow, concrete, etc.**
- **Never leave unattended if the upright position of the vehicle is not secure.**

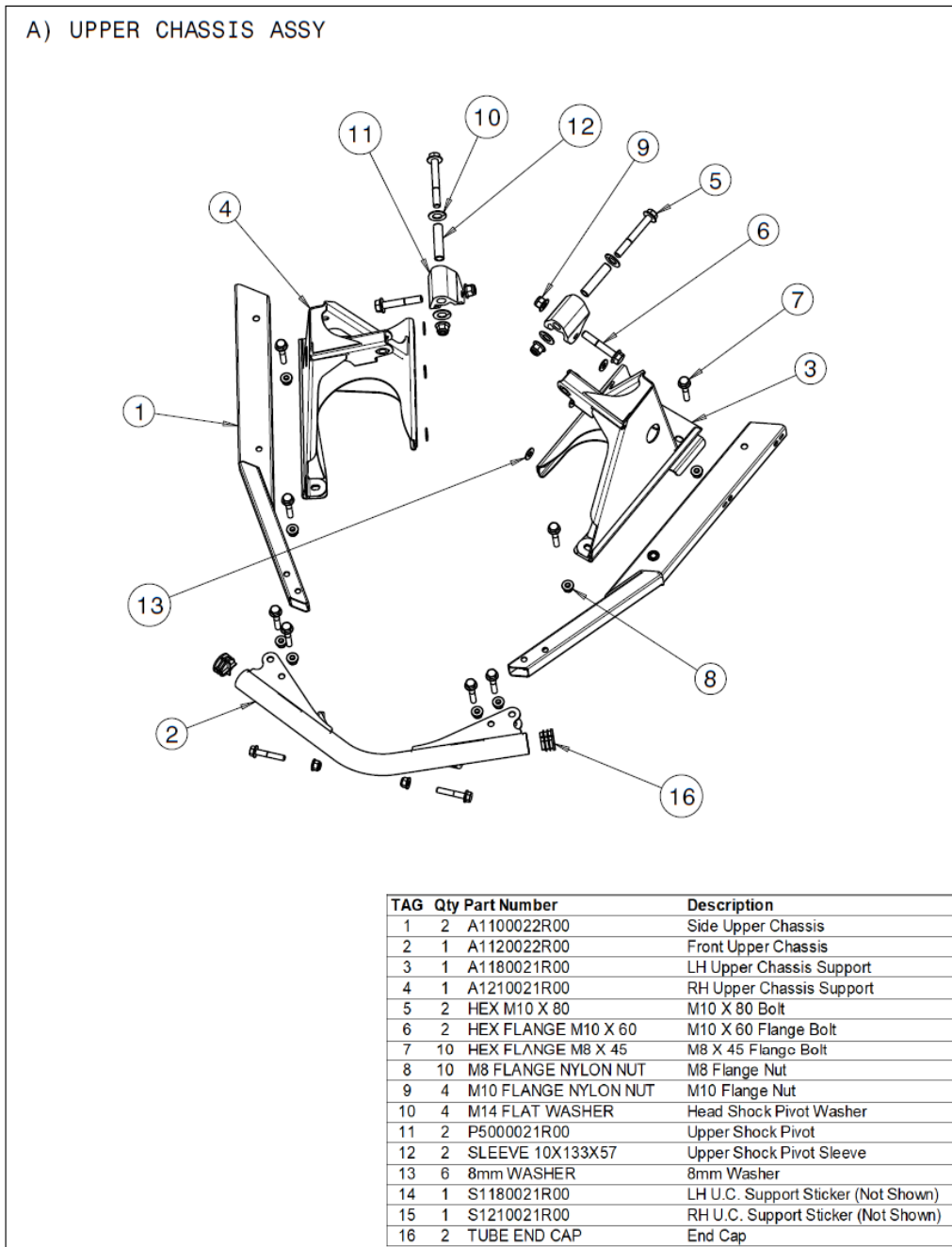
# **Pre-ride inspection**

**Before each ride, make sure to inspect all the following points. Adjust, clean or replace them immediately if necessary.**

- **Snowmobile Pre-Ride inspection point from your host vehicle.**
- **EXO Sled steering components.**
- **Make sure to remove ice, snow or anything that could interfere with your EXO Sled mobile components.**
- **Inspect the overall structure to be sure all components are in proper condition to be used.**
- **Ensure the bolts and nuts are not loose and are well torqued.**

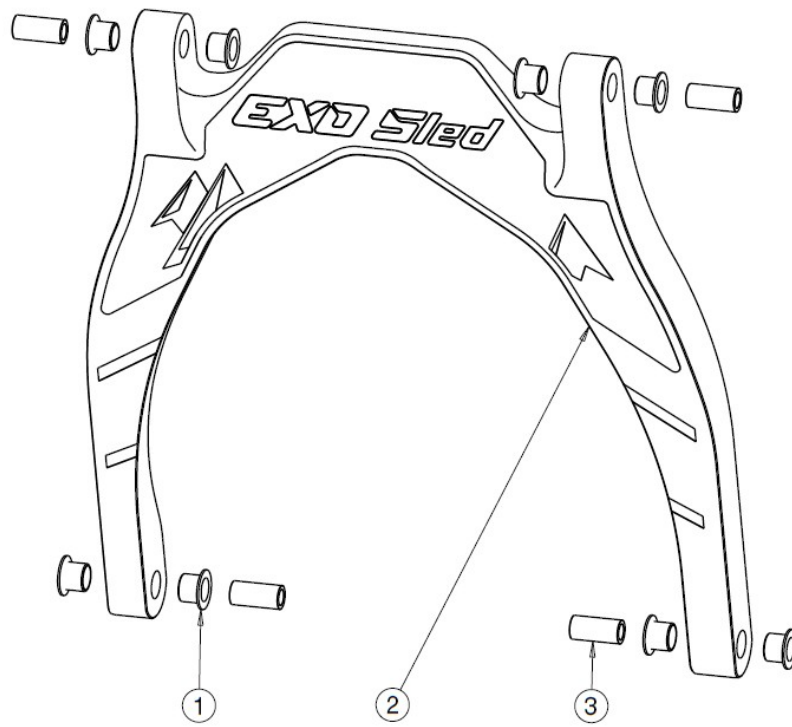
# References

## Components



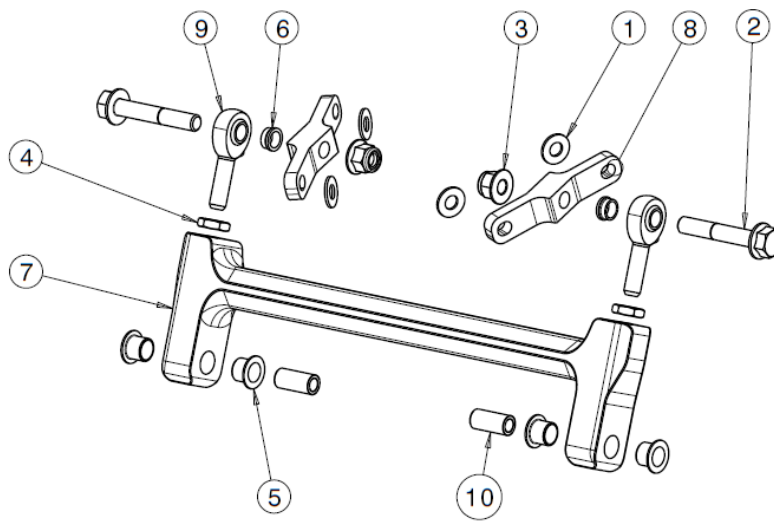


B) FRONT LINK ASSY



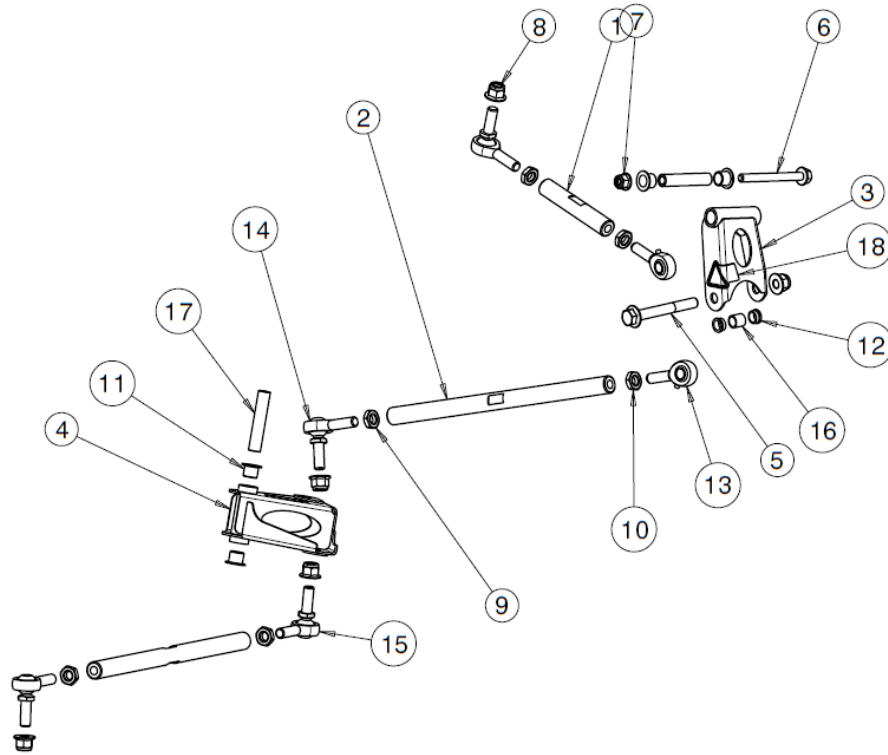
TAG	Qty	Part Number	Description
1	8	M12 T BUSHING	12mm Shoulder Bushing
2	1	P1300121R00	Front Suspension Link
3	4	BUSHING 8x12x25	Bushing 8mm x 12mm x 25mm
4	1	S1300122R00	Sticker

C) REAR LINK ASSY



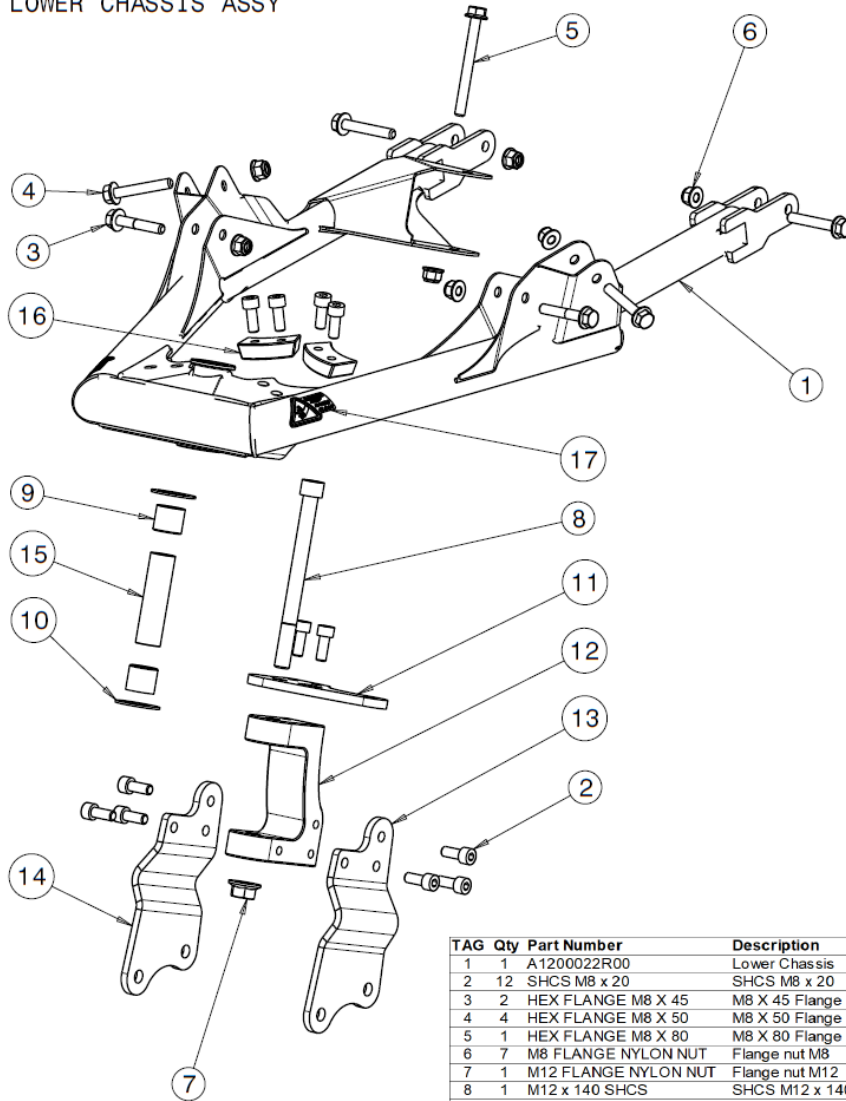
TAG	Qty	Part Number	Description
1	4	8mm WASHER	8mm Washer
2	2	HEX FLANGE M10 X 60	M10 X 60 Flange Bolt
3	2	M10 FLANGE NUT	Flange nut M10
4	2	M10 Lock Lut RH	Lock nut M10 RH
5	4	M12 T BUSHING	12mm Shoulder Bushing
6	2	P1160319R00	Rod End Spacer
7	1	P1600019R00	Rear Suspension Link
8	2	P1600119R00	Rear Suspension Adapter
9	2	ROD END 10 MF R	Rod End male/fem RH Thread
10	1	BUSHING 8X12X25	Bushing 8mm x 12mm x 25mm

D) STEERING ASSY



TAG	Qty	Part Number	Description
1	1	10 ROD-TIE	Rod-Tie
2	2	30 ROD-TIE	Rod-Tie
3	1	A1160019R00	Upper Idler Arm
4	1	A1530019R00	Lower Idler Arm
5	1	HEX FLANGE M10 X 80	M10 X 80 Flange Bolt
6	1	HEX FLANGE M8 X 80	M8 X 80 Flange Bolt
7	1	M8 FLANGE NYLON NUT	Flange nut M8
8	5	M10 FLANGE NYLON NUT	Flange nut M10
9	3	M10 Lock Lut LH	Lock nut M10 LH
10	3	M10 Lock Lut RH	Lock nut M10 RH
11	4	M12 T BUSHING	12mm Shoulder Bushing
12	2	P1160319R00	Rod End Spacer
13	2	ROD END 10 MF R	Rod End male/fem RH Thread
14	3	ROD END 10 MM L	Rod End male/male LH Thread
15	1	ROD END 10 MM R	Rod End male/male RH Thread
16	1	BUSHING 10X13X12	Bushing 10mm x 13mm x 12mm
17	2	BUSHING 8X12X604	Bushing 8mm x 12mm x 604mm
18	2	W1200022R01	Warning Stickers

E) LOWER CHASSIS ASSY



TAG	Qty	Part Number	Description
1	1	A1200022R00	Lower Chassis
2	12	SHCS M8 x 20	SHCS M8 x 20
3	2	HEX FLANGE M8 X 45	M8 X 45 Flange Bolt
4	4	HEX FLANGE M8 X 50	M8 X 50 Flange Bolt
5	1	HEX FLANGE M8 X 80	M8 X 80 Flange Bolt
6	7	M8 FLANGE NYLON NUT	Flange nut M8
7	1	M12 FLANGE NYLON NUT	Flange nut M12
8	1	M12 x 140 SHCS	SHCS M12 x 140
9	2	M20 BUSHING	Straight Bushing
10	2	M20 FLAT WASHER	Flat Washer
11	1	P1400021R00	Steer Plate
12	1	P1400121R00	Spindle
13	1	P1410222R00	LH Yeti Ski Adaptor Plate
13	1	P1400222R00	LH TS Ski Adaptor Plate
14	1	P1410422R00	RH Yeti Ski Adaptor Plate
14	1	P1400422R00	RH TS Ski Adaptor Plate
15	1	P1400219R00	Sleeve
16	2	P1220021R00	Steer Stopper
17	2	W1200022R01	Warning Stickers

## Installation Instructions

See [www.exosled.com](http://www.exosled.com) DOCUMENTATION page to see the *INSTALLATION INSTRUCTION* video

### ***Prepare and secure the snowmobile before this installation***

- Unbolt sway bar from sway bar link (2x)
  - Unbolt sway bar clamp (2x)
  - Unbolt rod-tie from ski spindle (2x)
  - Unscrew and unclip rod-tie rubber boot (2x)
  - Unbolt rod-tie from steering column (2x)
  - Get out rubber boot by removing one rod end (2x)
  - Unbolt lower point shock (2x)
  - Unbolt A-Arms (4x)
  - Remove rubber plug next to the shock upper point (2x)
  - Unbolt upper point shock (2x)
- 
- Install and torque a M10 x 80mm flange bolt at the front common point of the lower A-Arm (1x)  
Note: Use the original M10 nylon nut<sup>2</sup>.
  - Add washer to the upper A-Arm attachment points (6x)
  - Add washer to the rear lower A-Arm attachment points (4x)
  - Replace the plastic bushing by the supplied plug on the RH rod-tie rubber boot
  - Clip and screw the RH rod-tie rubber boot (Do not overtorque, See Polaris torque chart)
  - Clip the upper point of the LH rod-tie rubber boot
  - Install ***Upper Chassis Support*** ( *A1180021R00 & A1210021R00* ) to the upper shock point with the original shock bolt (2x)
  - Install and torque the M8 flange nut at the bottom of ***Upper Chassis Support*** (6x)
  - Install the vehicle rubber plug next to the shock bolt (2x)
  - Install the shock upper point (2x) (Ensure to have the original shock sleeve inside)



- Install **Rear Suspension Adapter** ( P1600119R00 ) (DO NOT TIGHTEN NUTS AT THIS POINT) (2x)
- Install **Lower Chassis Assembly** to the **Rear Suspension Adapter**
- Torque **Rear Suspension Adapter**'s nuts (4x)
- Install the M8x45 flange bolt and nut (4x) to **Side Upper Chassis** ( A1100022R00 ) (2x) and **Front Upper Chassis** ( A1120022R00 ) (DO NOT TIGHTEN NUTS AT THIS POINT)  
**Upper Chassis assembly** is created
- Install **Upper Chassis assembly** to the **Upper Chassis Support** (**MAX 15 N-m** Do not overtorque)
- Torque **Upper Chassis assembly**'s nuts (4x)
- Install the shock lower point (2x) to **Lower Chassis Assembly** (Ensure original bushings installed)
- Fasten **Upper Chassis assembly** and **Lower Chassis Assembly** to the **Front Link Assembly**
- Install **Upper Idler Arm** ( A1160019R00 ) sub assembly
- Fasten **Rod-Tie** ( 30 ROD TIE ) to the **Lower Idler Arm** ( A1530019R00 )
- Fasten **Rod-Tie** ( 10 ROD TIE ) to the snowmobile steering column
- Install the **Ski Adaptor Plates**, Ski Block and Ski – **See picture**
- Align the steering. Be sure to stand on the snowmobile to apply the ride weight to the ski. Be sure to have the same motion left and right on the steering
- Clip and screw the LH rod-tie rubber boot
- Ride safely and enjoy!

Note 1: See torque standard table for all fasteners

Note 2: Nylon nut should be tightened/loosened up to three times.

Note 3: Blue locktite is recommended for non nylon nut assembly

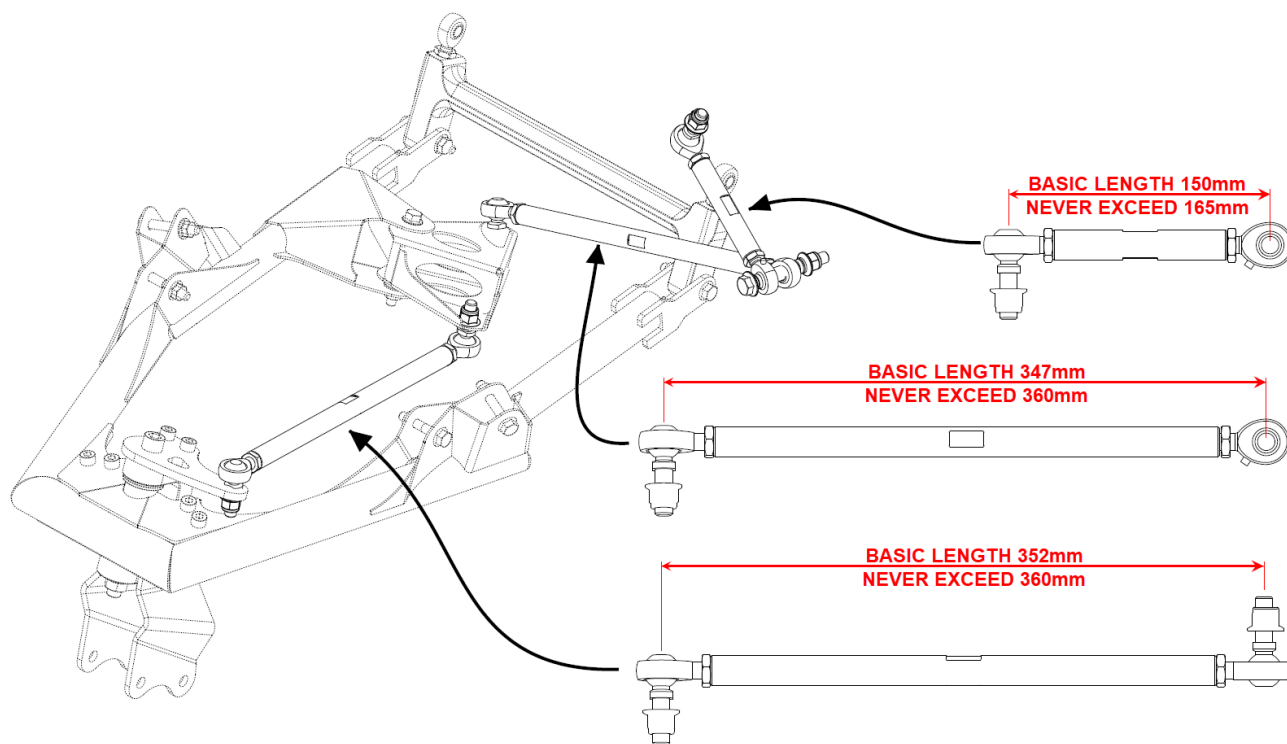
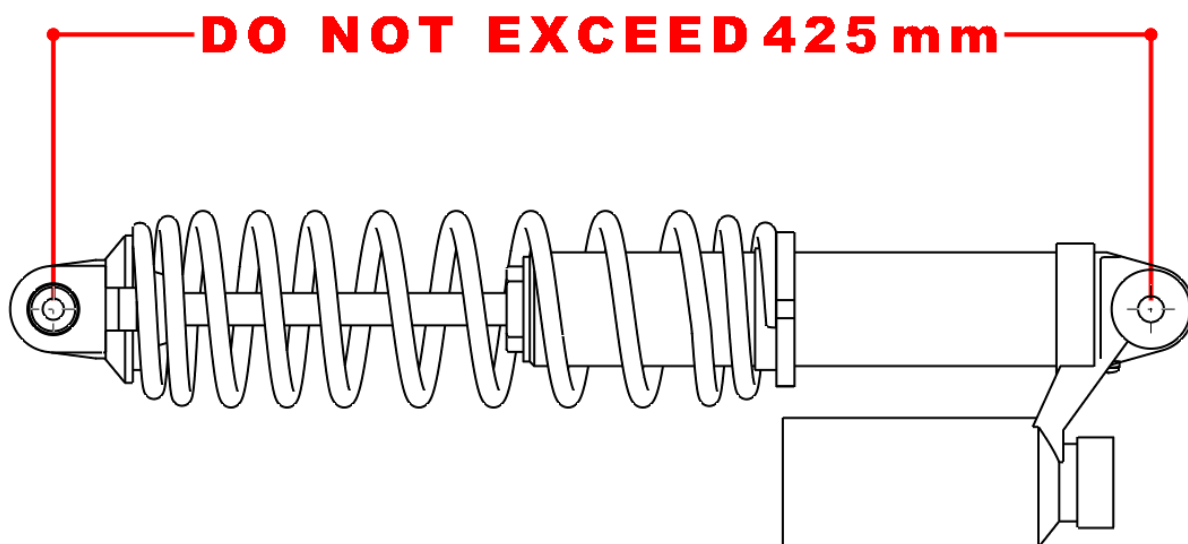
### Torque standard table

M8 ==> Torque at 20 N-m

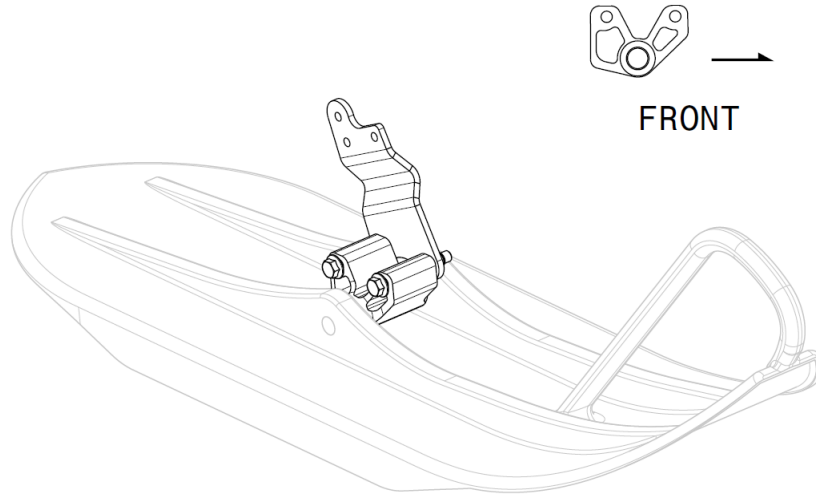
M10 ==> Torque at 40 N-m

M12 ==> Torque at 70 N-m

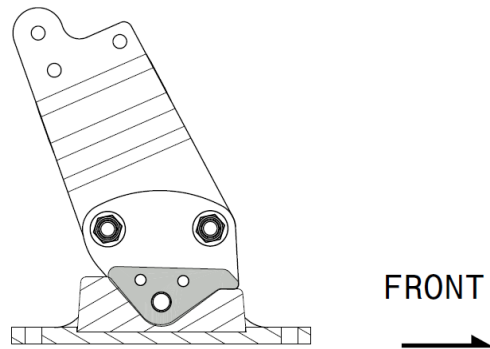
Rod end lock nut ==> Torque at 15 N-m



***Ski Adaptor Plates & Ski Block***



MTN.TOP & TIMBERSLED SKI BLOCK ORIENTATION  
WITH PLATES P1400222R00 & P1400422R00



MOTOTRAX SKI BLOCK ORIENTATION  
MUST BE INSTALLED WITH PLATES  
P1400222R00 & P1400422R00