

EXO Sled®

NT

Owner's guide



2024

WARNING

For your safety, read, understand and follow all the safety precautions and the instructions in this guide and on all EXO Sled labels.

This document does not replace the host snowmobile's safety and maintenance information. Therefore, read and understand your snowmobile's operation manual. Ensure you follow all safety precautions and maintenance information.

Copyright 2024 EXO Sled

All information in this guide is based on the last EXO Sled product information at the time of publication. Because our products are constantly improving, some minor differences may result between your EXO Sled kit and the information presented in this guide. With this publication, we only want to give you some references. Consequently, no legal responsibility can be accepted for omissions or inaccurate information.

Many thanks for your trust in our product.

We are pleased to welcome you in our EXO Sled family. Get ready to experience a new and powerful way of riding. Don't forget to visit our website at www.exosled.com for the latest EXO Sled news.

EXO Sled is proud to allow snowmobile users to convert their snowmobile into a snowbike with enhanced responsive handling, reliability and the power of a snowmobile.

We are a small company with big passions, and we are continuously implementing innovation in our kits to give you the best riding experience.

If you need more information, you are always welcome to [contact us](#) via our website.

Introduction

Owners and users must read carefully this guide.

This guide should be kept with the EXO Sled kit since it's an important reference document.

Keep in mind the pictures and illustrations may be slightly different from your product without affecting the sense of the document.

Make sure the product's first try is made safely, in a open space and well-known area.

Carefully follow the installation instructions in this document.

Safety

- **Make sure to do a pre-ride inspection before each ride.**
- **Pay attention to avoid debris or anything else that could interfere with mobile parts of the product.**
- **Be aware of your driving abilities and stay in control at all times.**
- **Keep your feet on the snowmobile running board at all time when the track is moving. As putting a foot outside the running board may result in serious injuries or death.**
- **Never ride with a passenger.**
- **Use extra caution when driving on slippery condition such as ice, hard pack snow, concrete, etc.**
- **Never leave unattended if the upright position of the vehicle is not secure.**

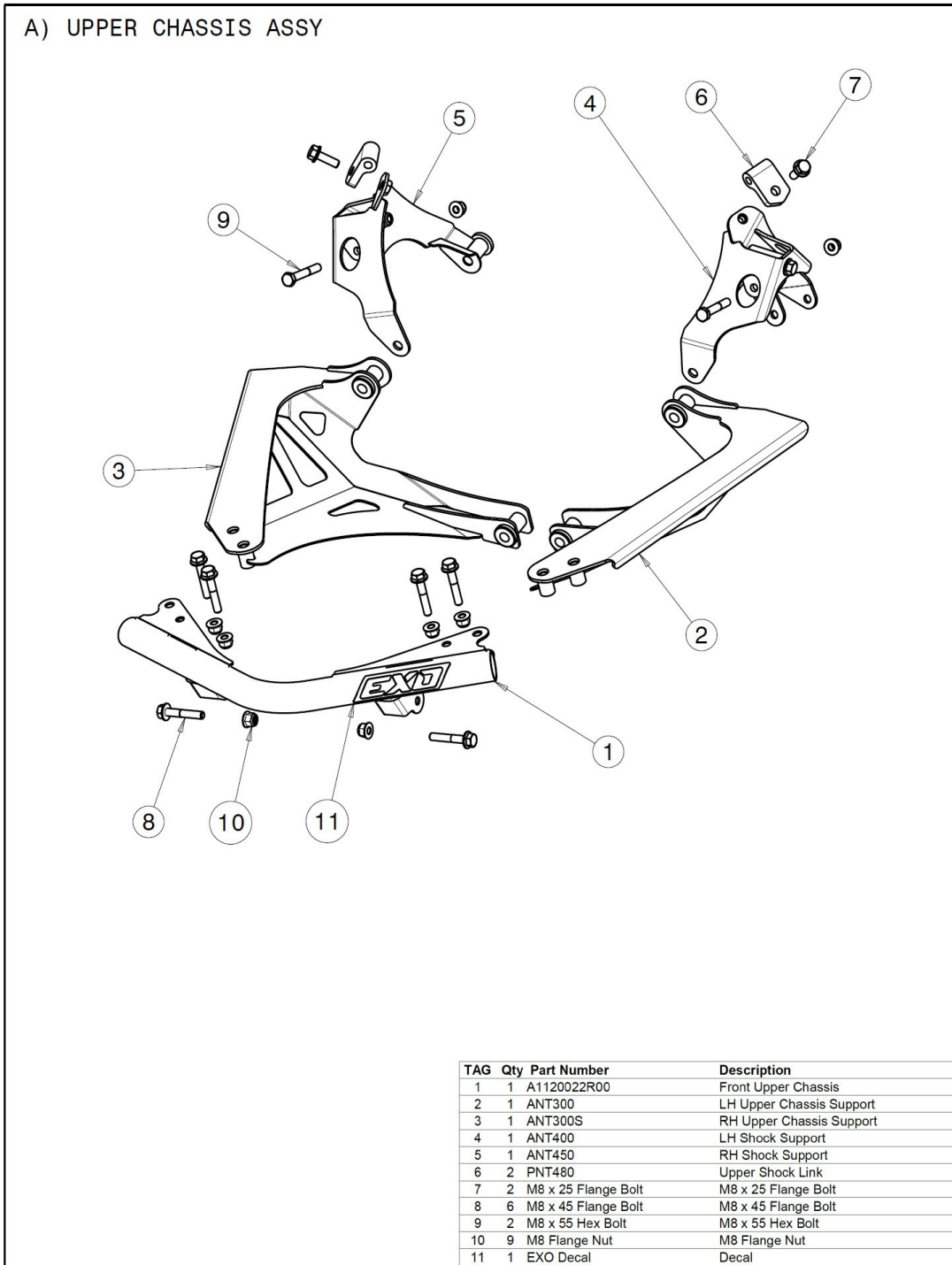
Pre-ride inspection

Before each ride, make sure to inspect all the following points. Adjust, clean or replace them immediately if necessary.

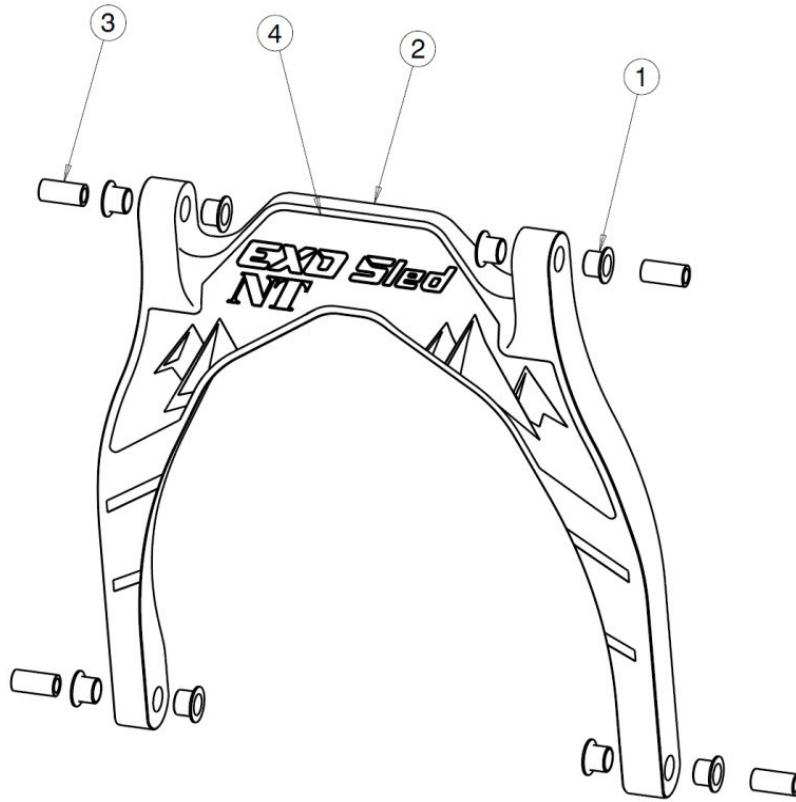
- **Snowmobile Pre-Ride inspection point from your host vehicle.**
- **EXO Sled steering components.**
- **Make sure to remove ice, snow or anything that could interfere with your EXO Sled mobile components.**
- **Inspect the overall structure to be sure all components are in proper condition to be used.**
- **Ensure the bolts and nuts are not loose and are well torqued.**

References

Components

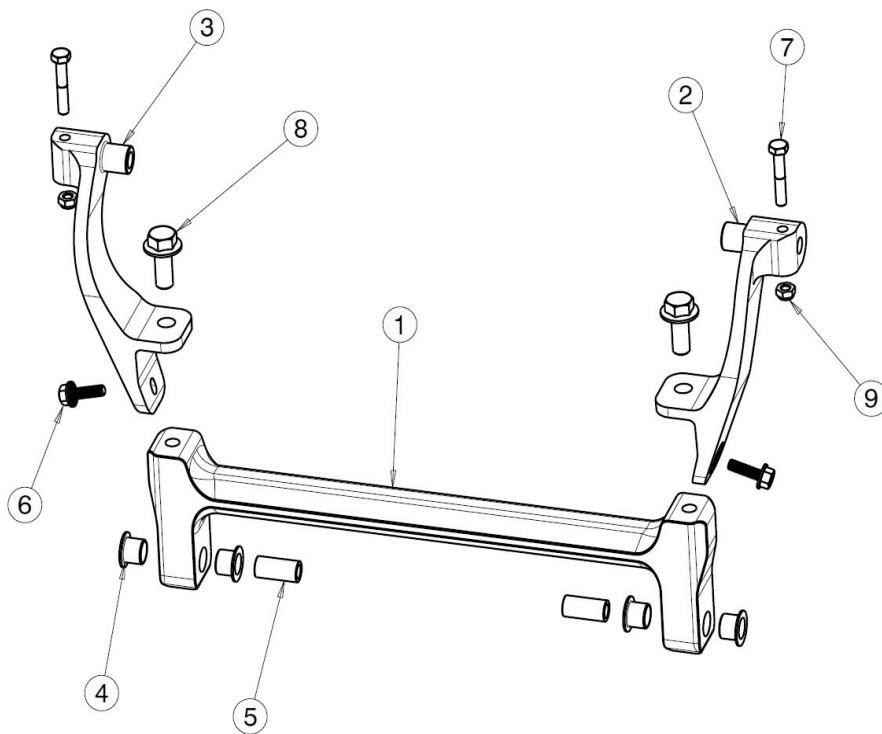


B) FRONT LINK ASSY



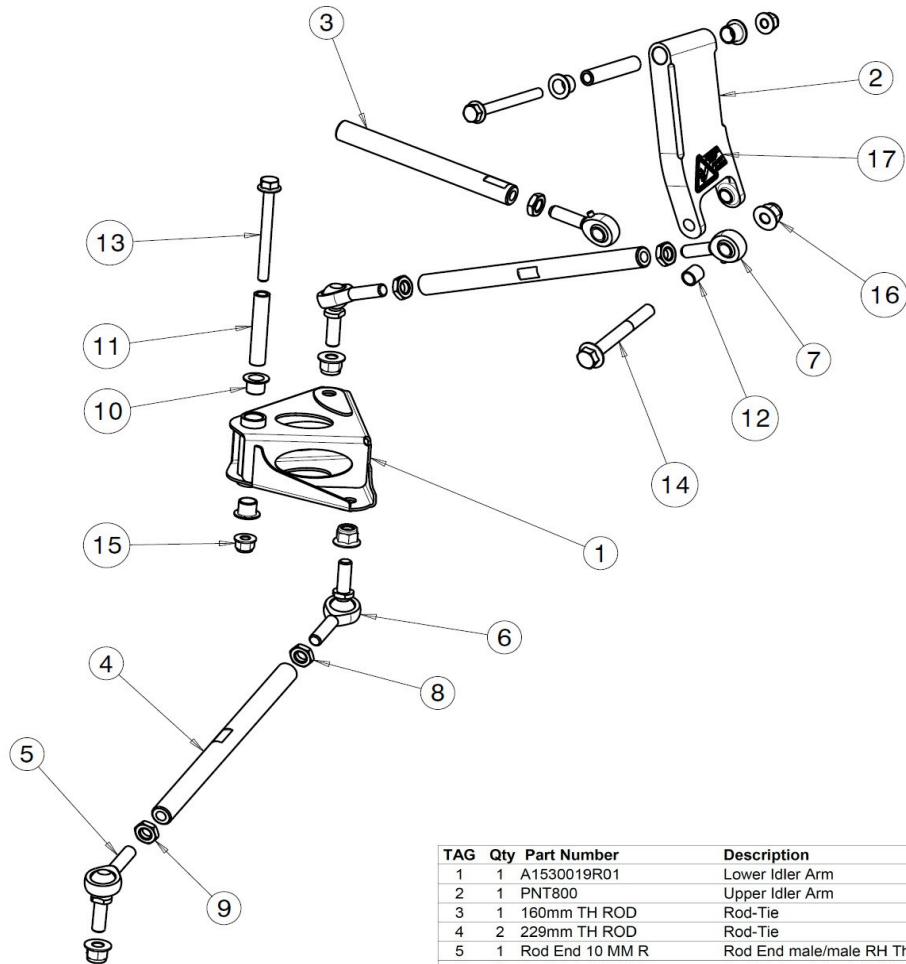
TAG	Qty	Part Number	Description
1	8	M12 T BUSHING	12mm Shoulder Bushing
2	1	P1300121R00	Front Suspension Link
3	4	BUSHING 8x12x25	Bushing 8mm x 12mm x 25mm
4	1	SNT01	NT Front Decal

C) REAR LINK ASSY



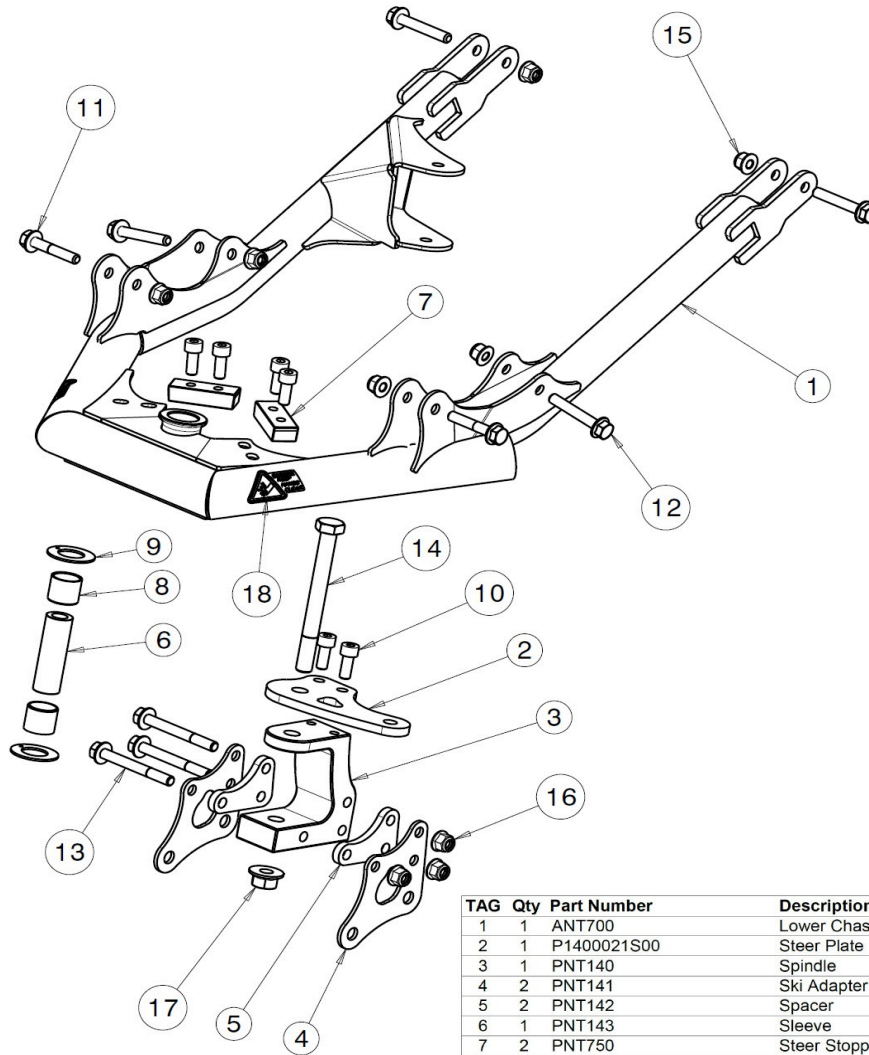
TAG	Qty	Part Number	Description
1	1	P1600019R00	Rear Suspension Link
2	1	PNT602	LH Rear Link
3	1	PNT602S	RH Rear Link
4	4	M12 T Bushing	12mm Shoulder Bushing
5	2	Bushing 8x12x25	Bushing 8mm x 12mm x 25mm
6	2	M6 x 20 S-Flange Bolt	M6 x 20 S-Flange Bolt
7	2	M6 x 35 Hex Bolt	M6 x 35 Flange Bolt
8	2	M10 x 25 Flange Bolt	M10 x 25 Flange Bolt
9	2	M6 Hex N Nut	Nylon Nut M6

D) STEERING ASSY



TAG	Qty	Part Number	Description
1	1	A1530019R01	Lower Idler Arm
2	1	PNT800	Upper Idler Arm
3	1	160mm TH ROD	Rod-Tie
4	2	229mm TH ROD	Rod-Tie
5	1	Rod End 10 MM R	Rod End male/male RH Thread
6	2	Rod End 10 MM L	Rod End male/male LH Thread
7	2	Rod End 10 MF R	Rod End male/fem RH Thread
8	2	M10-1.5 THIN LN L	Lock nut M10 LH
9	3	M10-1.5 THIN LN R	Lock nut M10 RH
10	4	M12 T Bushing	12mm Shoulder Bushing
11	2	SLEEVE 8X12X604	Bushing 8mm x 12mm x 604mm
12	1	SLEEVE 10X125X12	Bushing 10mm x 13mm x 12mm
13	2	M8 x 80 Flange Bolt	M8 X 80 Flange Bolt
14	1	M10 x 80 Flange Bolt	M10 X 80 Flange Bolt
15	2	M8 Flange Nut	Flange nut M8
16	4	M10 Flange Nut	Flange nut M10
17	1	W1200022R01	Warning Stickers

E) LOWER CHASSIS ASSY



TAG	Qty	Part Number	Description
1	1	ANT700	Lower Chassis
2	1	P1400021S00	Steer Plate
3	1	PNT140	Spindle
4	2	PNT141	Ski Adapter Plate
5	2	PNT142	Spacer
6	1	PNT143	Sleeve
7	2	PNT750	Steer Stopper
8	2	M20 Bushing	Straight Bushing
9	2	M20 Flat Washer	Flat Washer
10	6	M8 x 20 SHCS Bolt	M8 x 20 SHCS Bolt
11	2	M8 x 45 Flange Bolt	M8 x 45 Flange Bolt
12	4	M8 x 50 Flange Bolt	M8 x 50 Flange Bolt
13	3	M8 x 70 Flange Bolt	M8 x 70 Flange Bolt
14	1	M12 x 120 Hex Bolt	M12 x 120 Hex Bolt
15	9	M8 Flange Nut	M8 Flange Nut
16	1	M10 Flange Nut	M10 Flange Nut
17	1	M12 Flange Nut	M12 Flange Nut
18	2	W1200022R01	Warning Decal

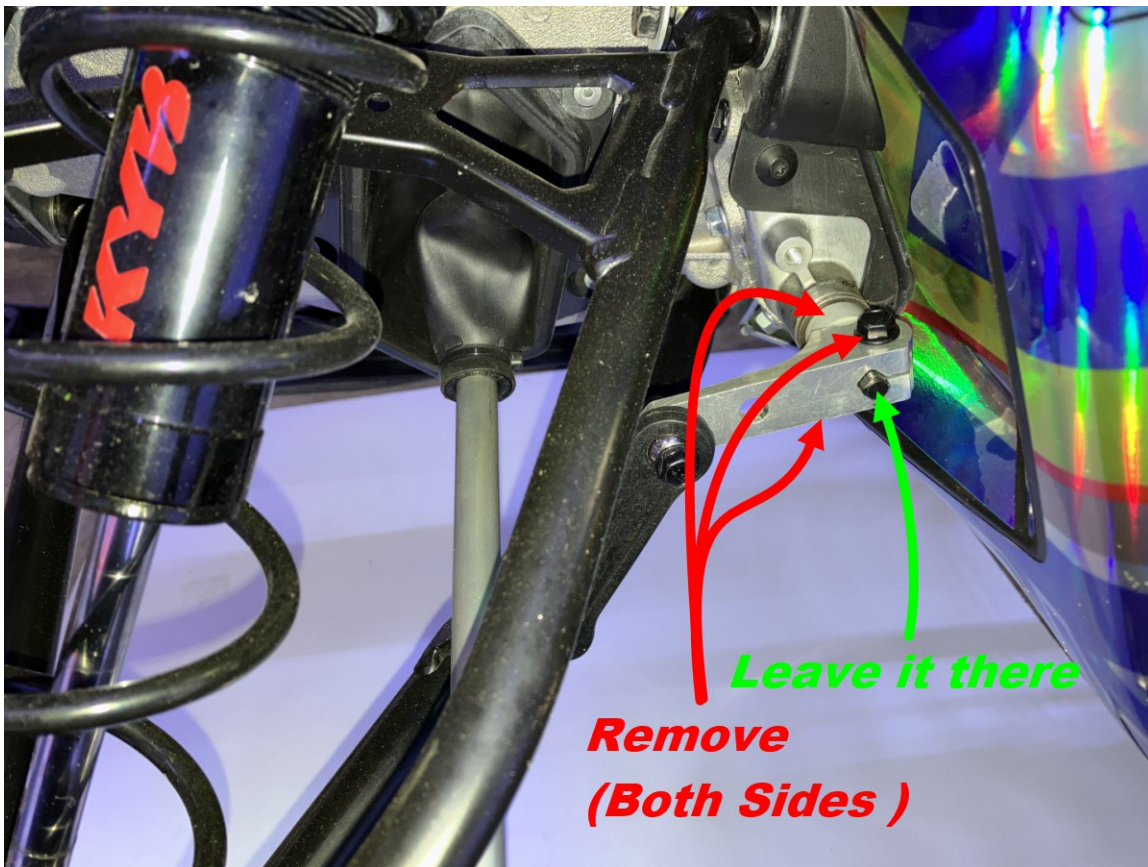
Installation Instructions

Prepare and secure the snowmobile before this installation.

- * RH (Right Hand) is the exhaust side.*
- * LH (Left Hand) is the clutch side.*
- * See torque standard table for all fasteners.*
- * Nylon nut should be tightened/loosened up to three times.*
- * Blue Loctite is recommended for non-nylon nut assembly.*

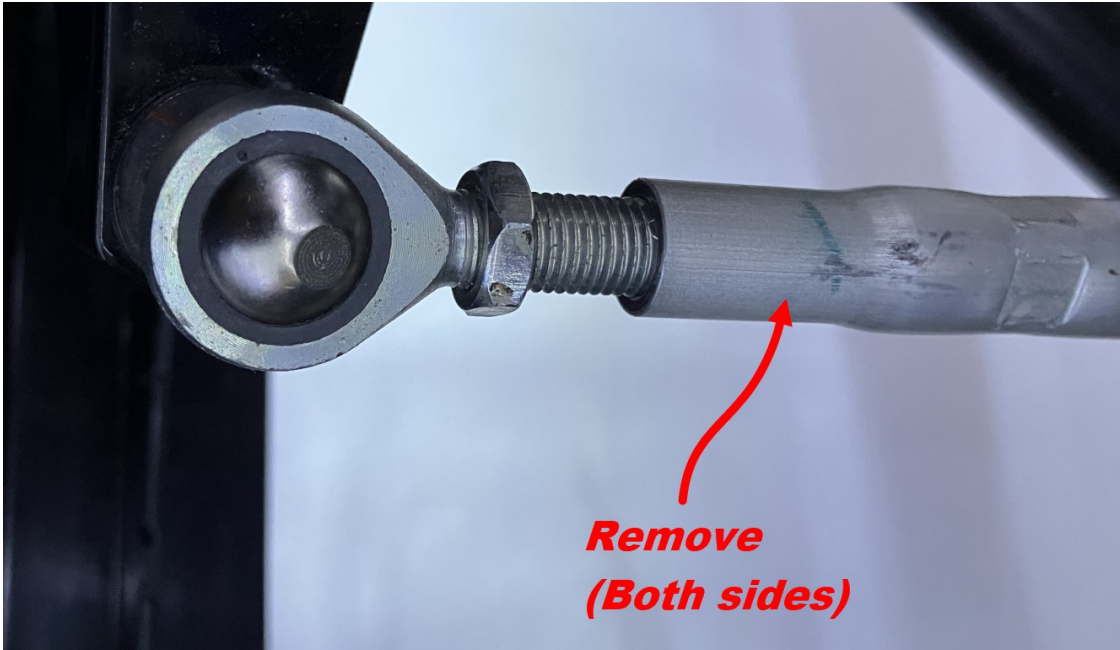


- Remove side panels, hood and tune pipe.
- Remove the stabilizer levers (2x) and bushings (2x).

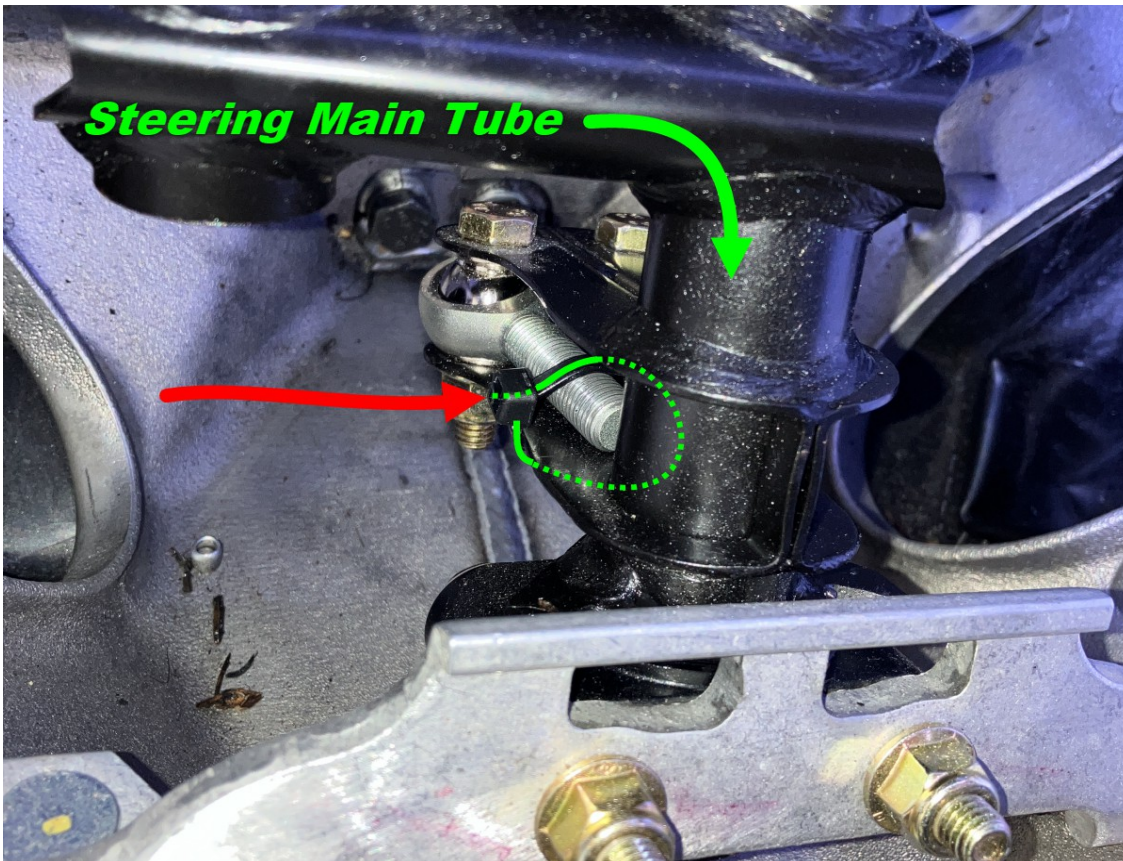


- Leave the stabilizer bar in the snowmobile.

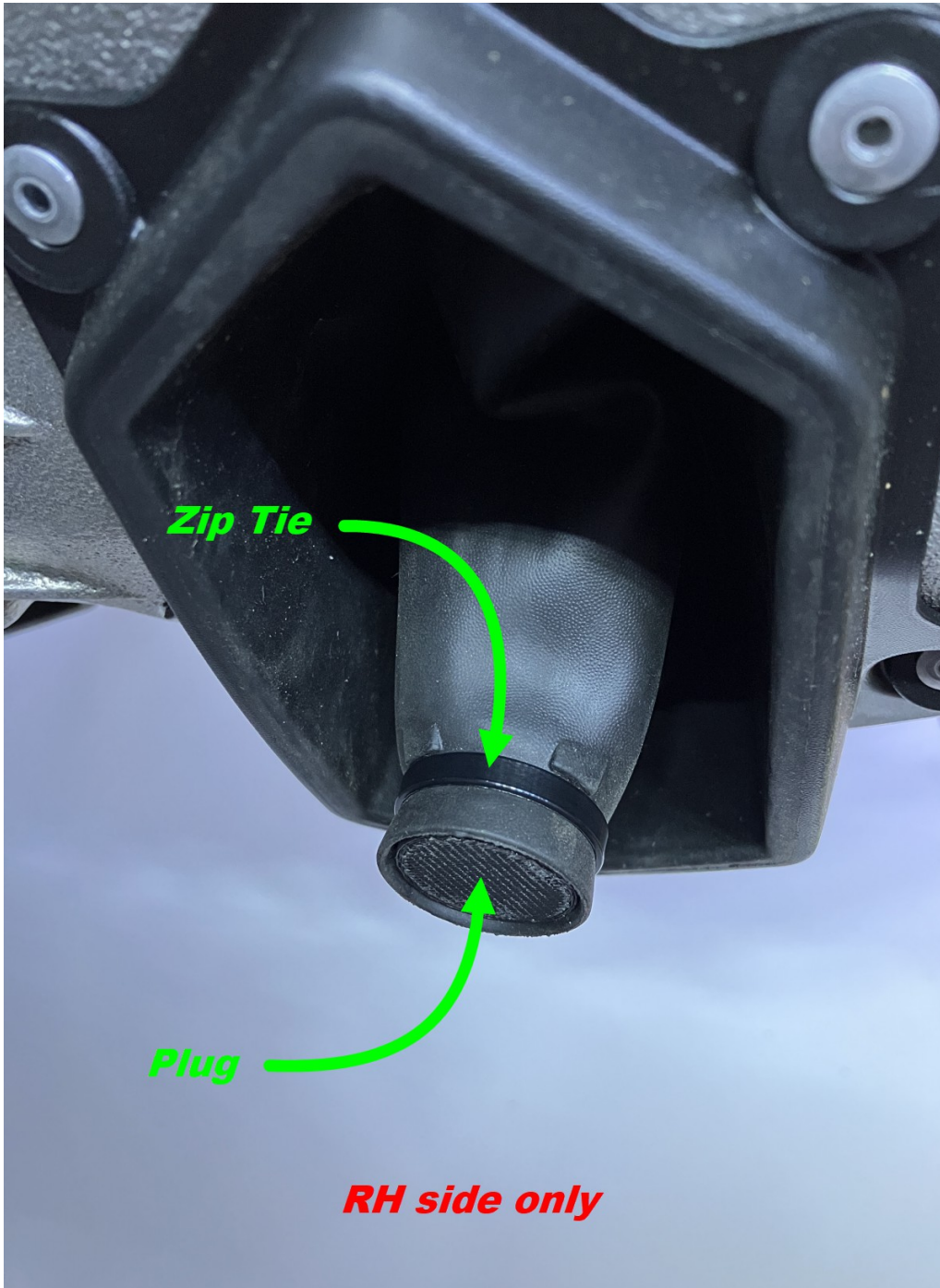
- Remove the Tie Rod (2x) from rod end.



- Use a zip tie to stabilize the RH rod end on the steering main tube's bracket.

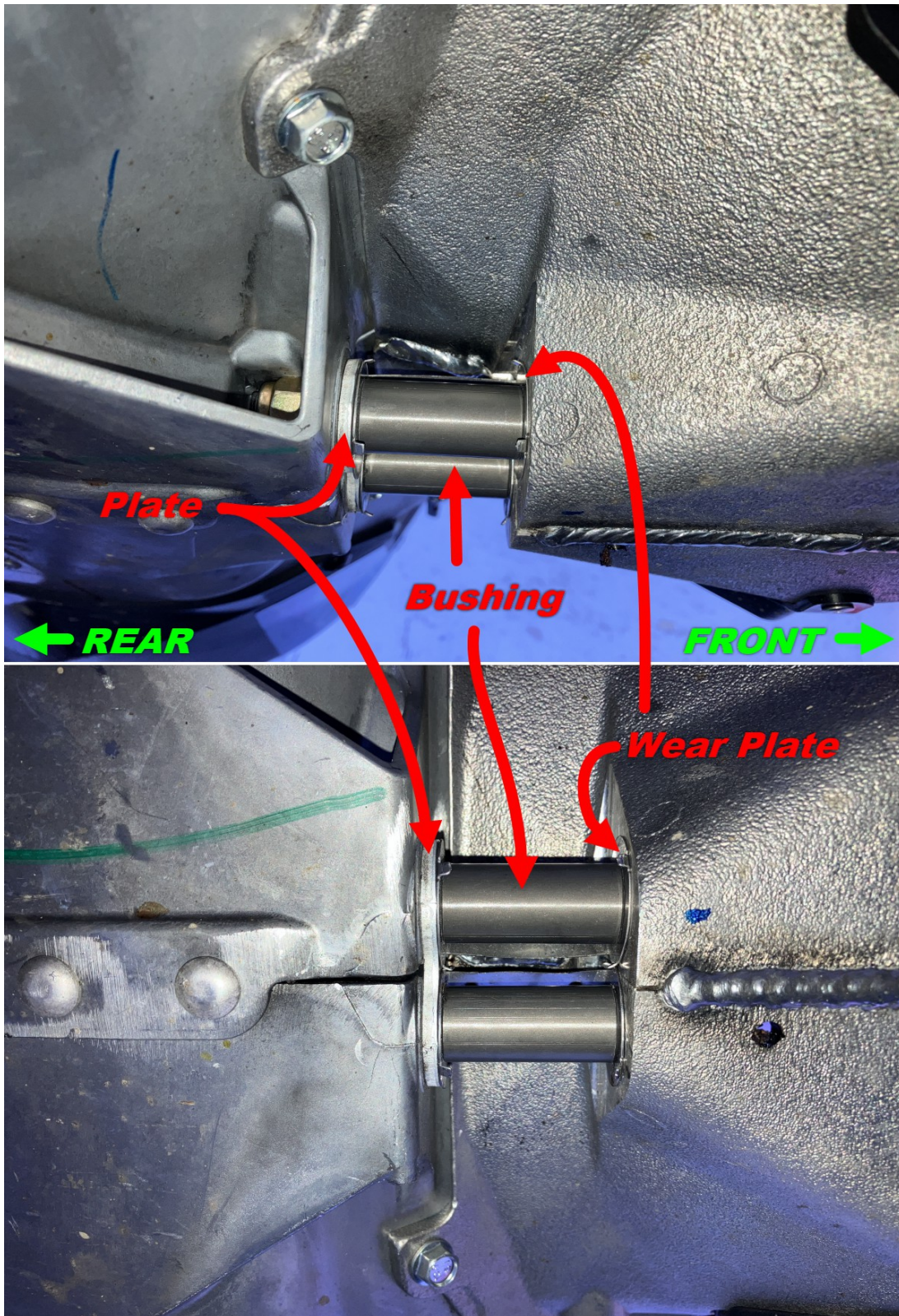


- Replace the RH plastic “tie rod guide” with the supplied plug and zip tie.



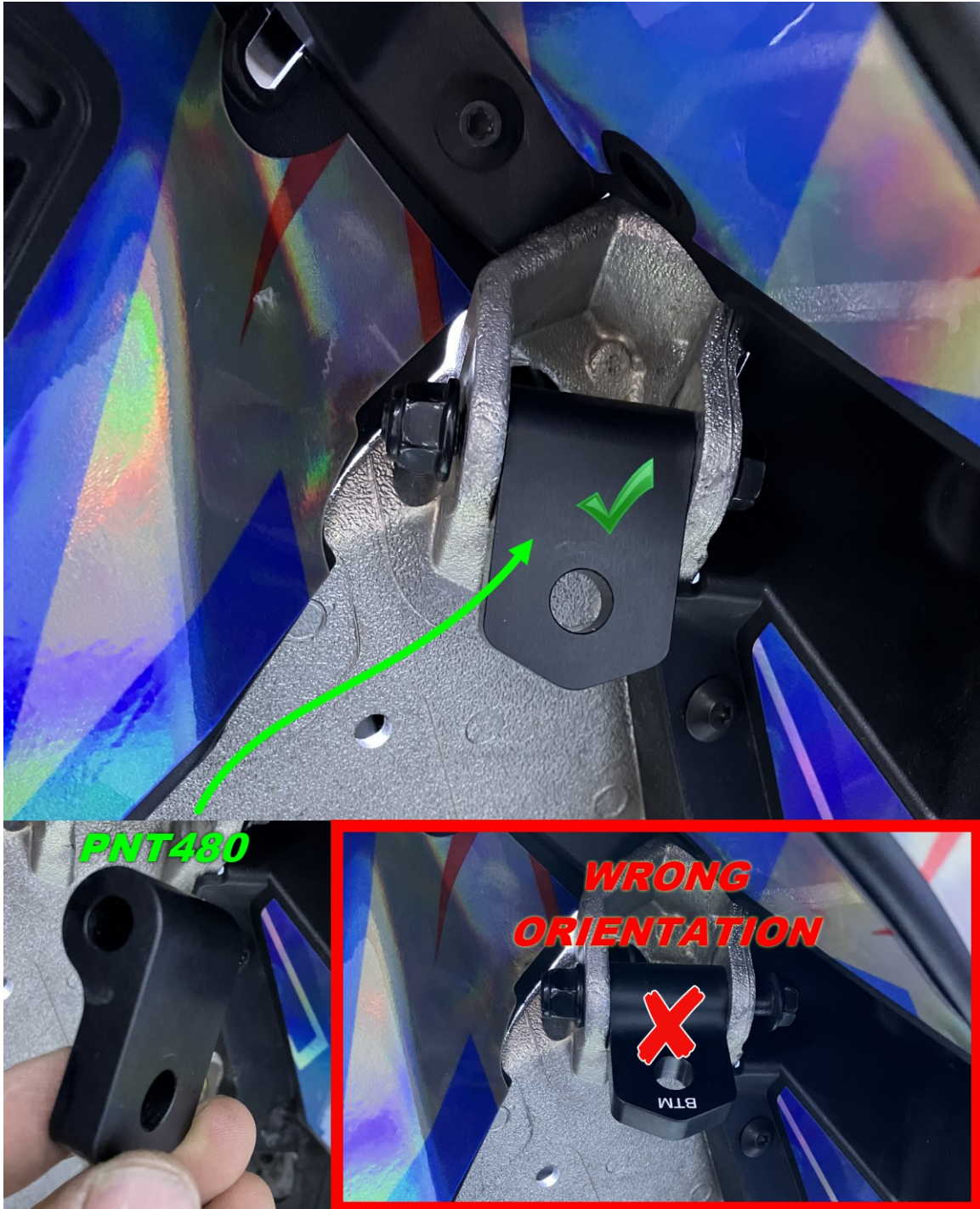
- Remove shocks (2x).
- Remove the front suspension (A-Arms, ski legs, skis, etc.).

- Re-install plates, bushings (2x), wear plates (2x) and tighten bolts (2x) of the rear lower A-Arm.

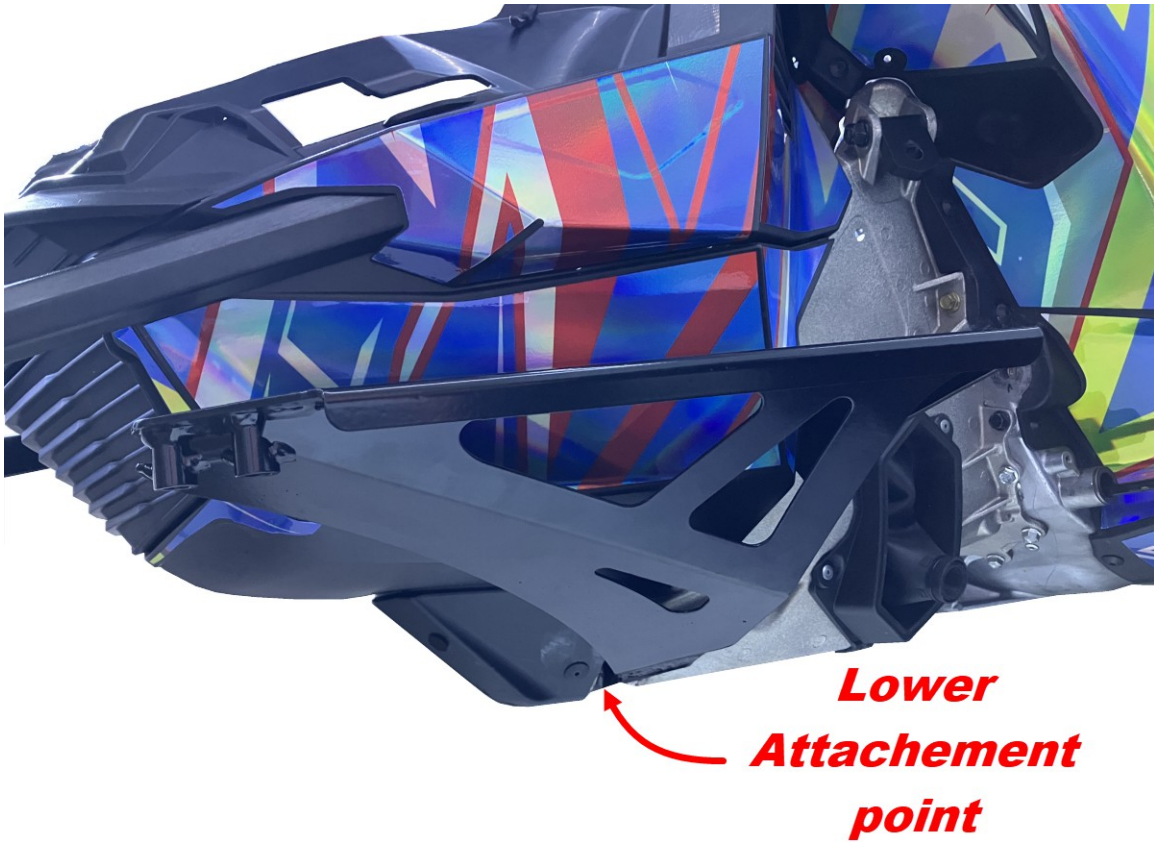


➤ It's time to install your new kit !

1. Install PNT480 (2x) without torquing the bolts (2x) Note: Use the original M8 shock bolts and nuts. * Make sure to place "BTM" marks toward the floor.



2. Install PNT300 by securing the lower attachment point with the original lower A-Arm bolt without torquing the bolt.



3. Repeat the same operation with the PNT300S.
4. Install A1120022R00 on PNT300 & PNT300S with supplied M8 x 45 bolts and nuts without torquing them.



5. Install ANT400 and ANT450 with M8 x 25 Flange Bolts, A-Arms's bolt and A-Arms's washers, without torquing the bolts.



6. Tighten the M8 x 25 Flange bolts installed in step #5.



7. Tighten the original A-Arms's bolts installed in step #2 & #5.

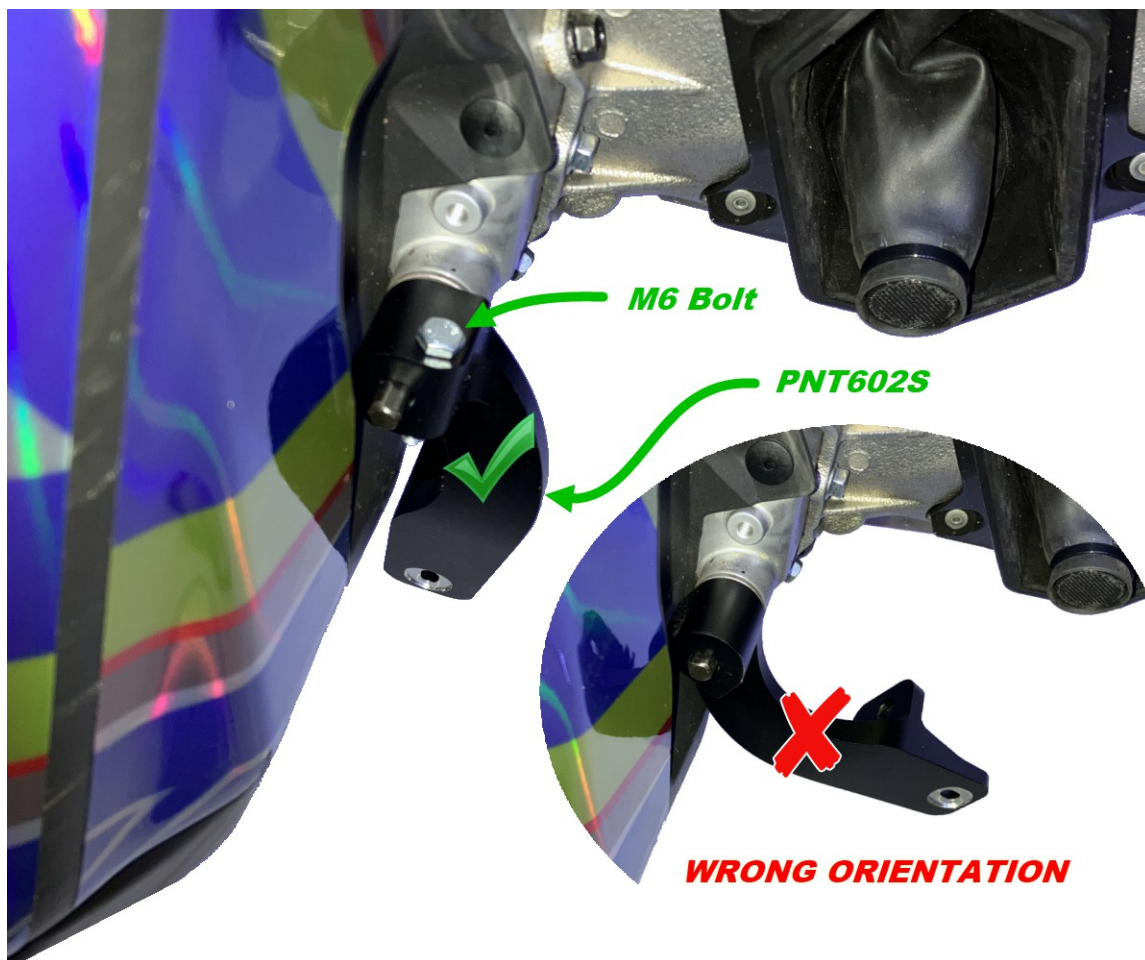
8. Tighten the M8 x 45 bolts installed in step #4.



9. Tighten the M8 bolts installed in step #1.



10. Install PNT602S with the stabilizer bar and secure the assembly with the M6 bolt and nut. * It's normal to have a play between both parts.

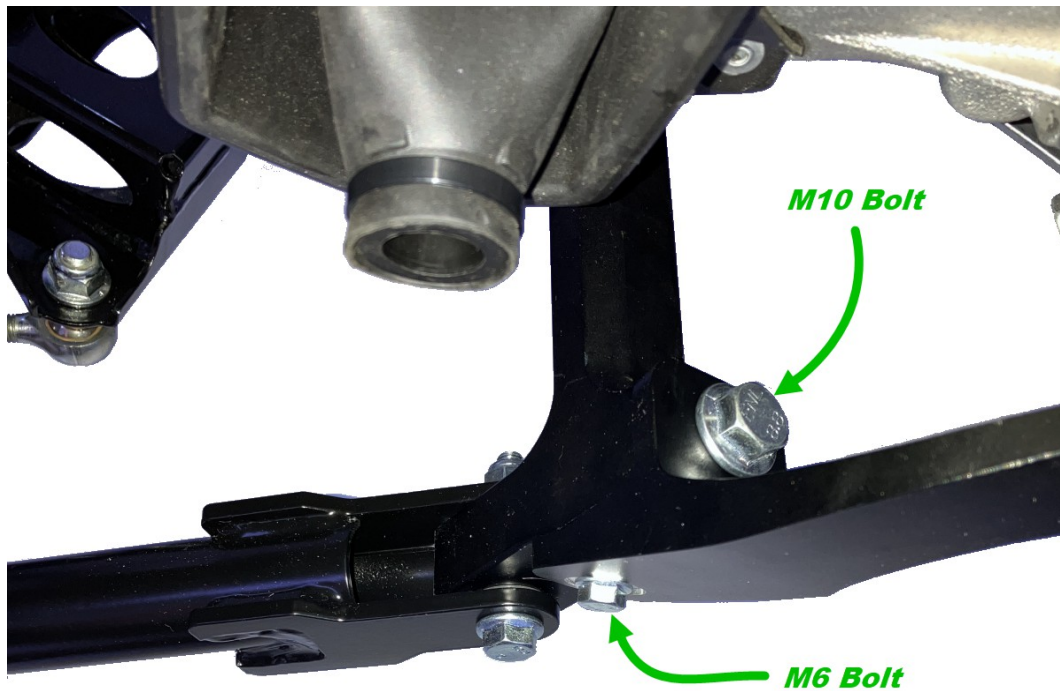


11. Repeat the same operation with the PNT602. * It's normal to have a play between both parts.

12. Install the front link assembly to the front upper structure A1120022R00 with supplied M8 x 45 bolts and nuts.



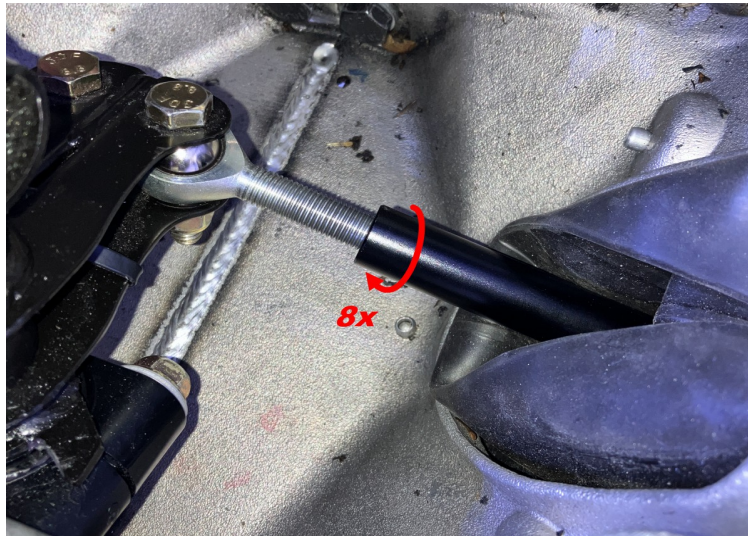
13. Attach the rear link assy to PNT602 & PNT602S with M10 and M6 bolts.



14. Unscrew the 160mm TH ROD from the "STEERING ASSY".

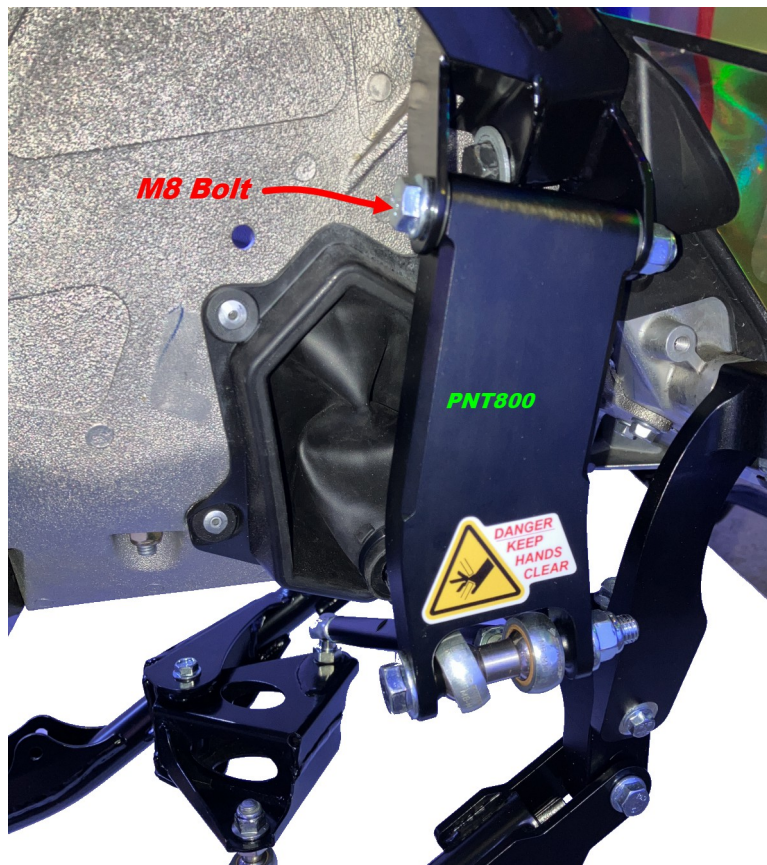
15. Screw the 160mm TH ROD to the steering LH rod end (8 rotations) through the rubber boot.

* Make sure to place the flat surfaces of the 160mm TH ROD outside the engine bay.



16. Screw the 160mm TH ROD to the PNT800's free rod end.

17. Attach the PNT800 to ANT400 with the M8 bolt.



18. Attach the Rod End M10mm to A1530019R01's 10mm hole.

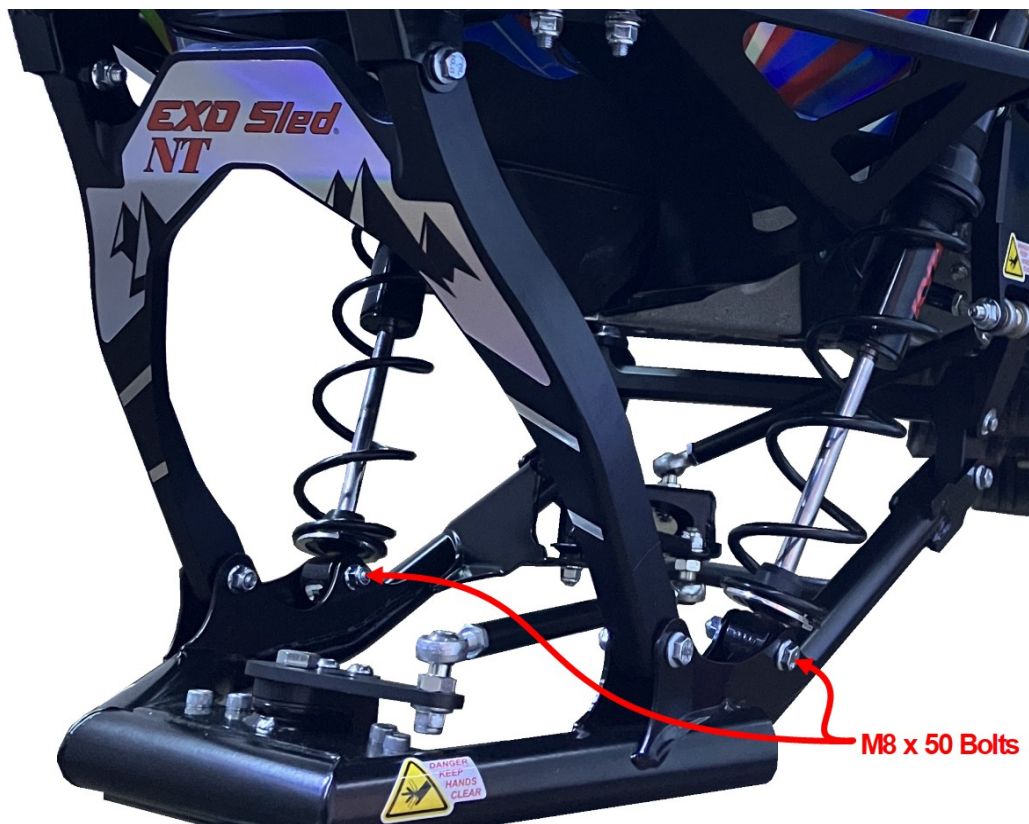


19. Attach the upper portion of the LH shock to ANT400 with the M8 x 55 bolt and nut.

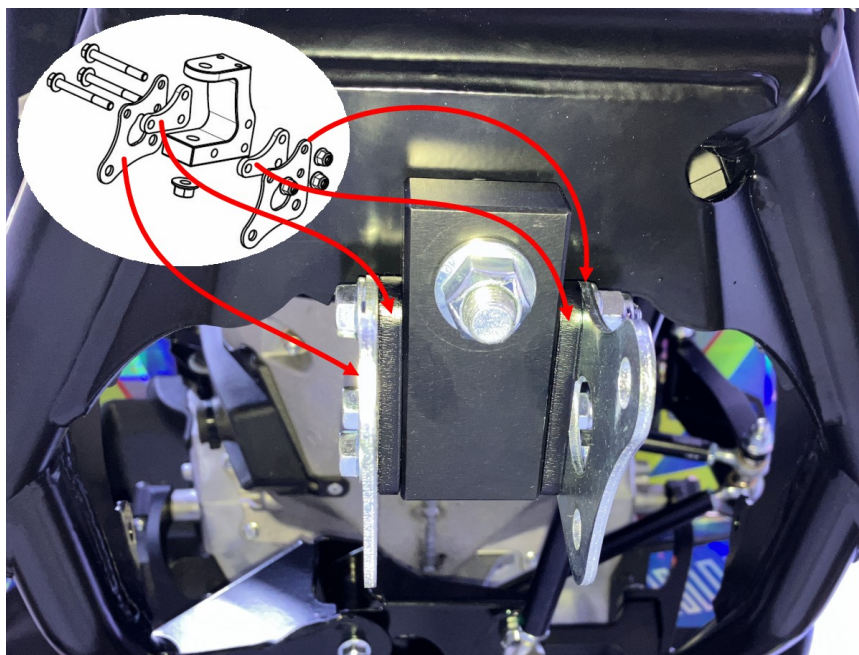


20. Repeat the same operation with the RH shock to ANT450.

21. Attach the lower portion of both shocks to ANT700 with M8 x 50 bolts and nuts.



22. Assemble M8 x 70 bolts (3x), PNT142 (2x), PNT141 (2x) and M8 nuts (3x) to PNT140.



23. Install your ski to PNT141 plates.
24. Align the steering. Be sure to stand on the snowmobile to apply the ride weight to the ski. Make sure to have the same motion left and right on the steering.
25. Tighten the lock nut and verify all bolts and nuts torques.
26. Ride safely and enjoy!

Torque standard table

M8 ==> Torque at 20 Nm (15 ft-lb)

M10 ==> Torque at 40 Nm (29 ft-lb)

M12 ==> Torque at 70 Nm (50 ft-lb)

Rod end lock nut ==> Torque at 15 Nm (130 in-lb)

